

Name _____

Festival Number _____ Instrument _____

Teacher _____

Level 1B

1. Ear Training: Each example will be played twice.

A. Circle whether the sound you hear is forte or piano.

1. Piano Forte

2. Piano Forte

B. Circle whether the sound you hear is legato or staccato.

3. Legato Staccato

4. Legato Staccato

C. You will hear a three-note pitch pattern. Circle whether the notes move up, move down or repeat.

5. Up Down Repeat

6. Up Down Repeat

7. Up Down Repeat

D. You will hear a rhythm pattern. Circle the pattern you hear.

8.

Two musical examples in 4/4 time. The top example shows a quarter note, an eighth note pair, and a half note. The bottom example shows a quarter note, an eighth note pair, and a quarter note.

9.

Two musical examples in 3/4 time. The top example shows a quarter note, an eighth note pair, and a quarter note. The bottom example shows a quarter note, an eighth note pair, and a quarter note.

10.

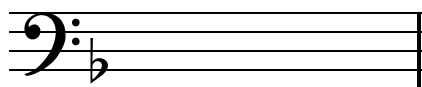
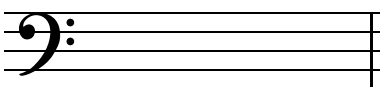
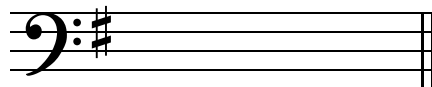
Two musical examples in 2/4 time. The top example shows a quarter note and an eighth note pair. The bottom example shows a quarter note, an eighth note pair, and a quarter note.

Student Name: _____

Festival No. _____ Instrument: _____

Teacher Name: _____

2. Name these key signatures and write what letter name is sharp or flat. (2 pts per blank)



Fill in blank: Key of _____

Key of _____

Key of _____

Name of sharp or flat _____

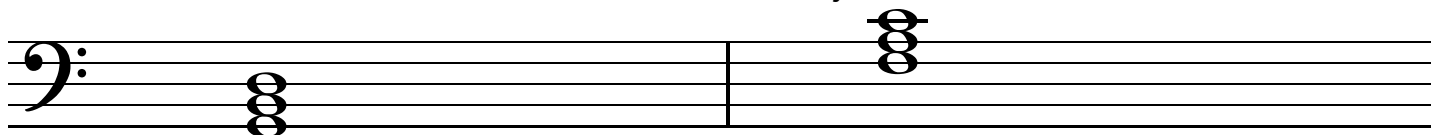
(no sharp or flat here!)

Name of sharp or flat _____

3. Name all your Festival Solos and their composers. (10 points)

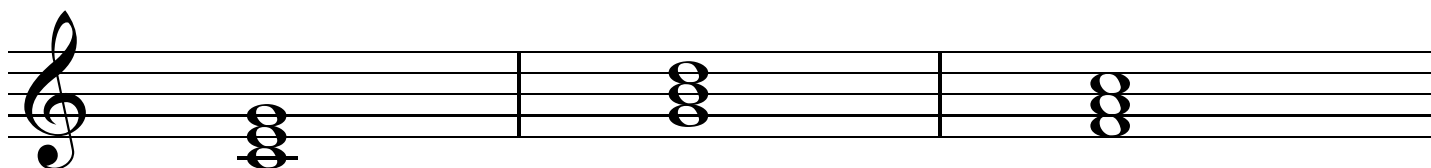
_____	Composer _____
_____	Composer _____
_____	Composer _____
_____	Composer _____

4. Circle the correct letter to name these major triads. (2 pts each)



F C G

F C G



F C G

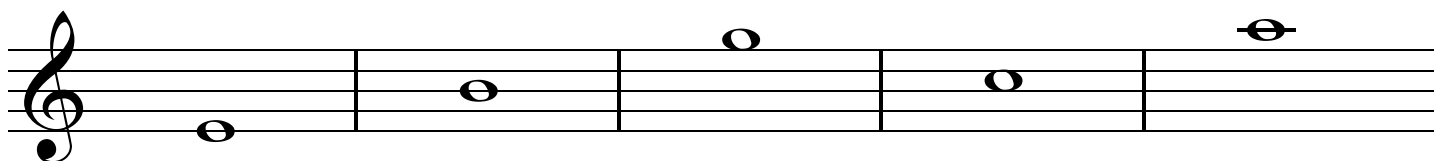
F C G

F C G

5. Name these notes.

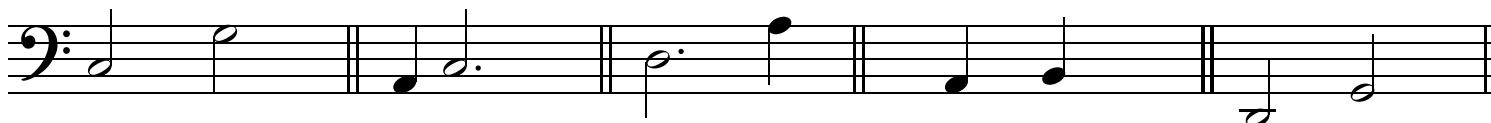
(1 pt each)





6. Write the number name of these intervals.

(1 pt each)



Circle whether the notes are a half step or whole step.

(1 point each)

C	B
half step	
whole step	

A	B
half step	
whole step	

A	G
half step	
whole step	

E	F
half step	
whole step	

D	C
half step	
whole step	

7. Circle the correct step to complete the order for a major scale.

(1 point each blank)

Whole - Whole - _____ - Whole - Whole - _____ - _____
 Half or Whole Half or Whole Half or Whole

Write the correct letter names to complete these major scales.

(1 point each blank)

C	D	E	_____	G	_____	B	_____
F	G	_____	B \flat	C	_____	E	F
G	_____	B	C	_____	E	F \sharp	G

8. Circle whether the following statements are True or False.

(1 point each)

A natural \natural cancels a sharp or flat. True False

In music, *fine* means "very well". True False

b is a treble clef. True False

Staccato means short and detached. True False

\sharp means to raise a note a half step. True False

b is called a sharp. True False

f is the symbol for loud. True False






These notes are connected by a beam.  True False

A key signature tells how many counts are in each measure. True False

 is a treble clef. True False






9. Circle the correct name of each note or rest and write the number of counts it gets.

(1 point each part)

	↙Circle One↘	or		Write in number	↓
	_____ quarter note?		_____ half note?	<i>Usually gets</i>	_____ <i>count(s).</i>
	_____ quarter notes?		_____ eighth notes?	<i>Together, they usually get</i>	_____ <i>count(s).</i>
	_____ dotted half note?		_____ half note?	<i>Usually gets</i>	_____ <i>count(s).</i>
	_____ half rest?		_____ whole rest?	<i>Usually gets</i>	_____ <i>count(s).</i>
	_____ half rest?		_____ quarter rest?	<i>Usually gets</i>	_____ <i>count(s).</i>

10. Circle the correct answer for each symbol or term.

(1 point each)

<i>legato</i>	_____ short and detached?	or	_____ smooth and connected?
	_____ hold?	or	_____ lower a half step?
<i>mp</i>	_____ medium loud?	or	_____ medium quiet
<i>rit.</i>	_____ gradually getting slower?	or	_____ gradually getting faster?
	_____ tie?	or	_____ flag?
<i>mf</i>	_____ medium loud?	or	_____ medium quiet?
	_____ key signature?	or	_____ time signature?
	_____ slur?	or	_____ tie?
<i>p</i>	_____ quiet?	or	_____ loud?
	_____ slur?	or	_____ tie?