

**Level 4B**

**1. Ear Training: Each example will be played twice.**

A. Circle the scale you hear.

1. major      natural minor      harmonic minor      melodic minor      chromatic      whole tone


B. Circle the interval you hear.

2. maj 3      maj 6      maj 7      per 8

C. Identify the chord quality. Chords may be played in any inversion. (1 pt each)

3. major                    minor                    augmented                    diminished
4. major-minor 7th      minor-minor 7th      major-major 7th      half-diminished 7th      fully diminished 7th  
(dominant 7th)      (minor 7th)      (major 7th)

D. Circle the pitch series you hear.

5. 

D. Circle the rhythm pattern you hear.

6. 

E. Circle the melody you hear.

7. 

2. Add the **upper** note to write the intervals requested. **Important:** note key signatures and clefs. (2 pts each)

3. Circle the correct spelling of each dominant 7 chord below. (2 pts each)

A. V <sup>7</sup> key of E	B. V <sup>7</sup> key of E <sub>b</sub>	C. V <sup>7</sup> key of F <sub>#</sub>	D. V <sup>7</sup> key of C <sub>b</sub>	E. V <sup>7</sup> key of G
A, C <sub>#</sub> , E, G	F, A <sub>b</sub> , B <sub>b</sub> , D	C <sub>#</sub> , E <sub>#</sub> , G <sub>#</sub> , B <sub>#</sub>	G <sub>b</sub> , B <sub>b</sub> , D <sub>b</sub> , F <sub>b</sub>	D, F <sub>#</sub> , A, C <sub>#</sub>
F <sub>#</sub> , A, B, D <sub>#</sub>	C, E <sub>b</sub> , G <sub>b</sub> , A <sub>b</sub>	F <sub>#</sub> , A, C <sub>#</sub> , E	D <sub>b</sub> , F, A <sub>b</sub> , B <sub>b</sub>	E, G <sub>#</sub> , B, D <sub>#</sub>
F <sub>#</sub> , A <sub>#</sub> , C, E	C, E, G, A <sub>b</sub>	E, G <sub>#</sub> , B, C <sub>#</sub>	B <sub>b</sub> , D <sub>b</sub> , F, G	G <sub>#</sub> , B, D, E
E, G <sub>#</sub> , B, D	B <sub>b</sub> , D <sub>b</sub> , E <sub>b</sub> , G	E <sub>#</sub> , G <sub>#</sub> , B, C <sub>#</sub>	A <sub>b</sub> , C, E <sub>b</sub> , G <sub>b</sub>	F <sub>#</sub> , A, C, D

4. Write the names of the periods of Music History which correspond to the following dates: (1 pt each)

- A. 1900-present \_\_\_\_\_
- B. 1750-1825 \_\_\_\_\_
- C. 1600-1750 \_\_\_\_\_
- D. 1825-1900 \_\_\_\_\_
- E. 1890-1915 \_\_\_\_\_

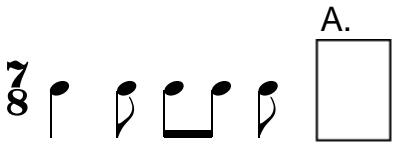
Write the period of Music History associated with the given composers

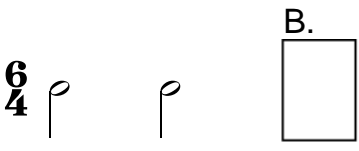
- F. Rameau \_\_\_\_\_
- G. Ravel \_\_\_\_\_
- H. Griffes \_\_\_\_\_
- I. Granados \_\_\_\_\_
- J. Copland \_\_\_\_\_

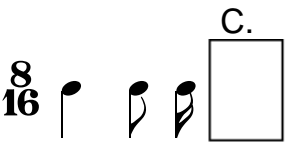
5. Write the chord (root is given) using whole notes and accidentals. Use correct inversion. (2 pts each)

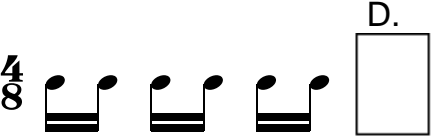
6. Add **one note** to complete each measure.

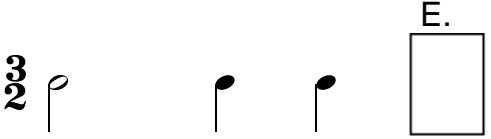
(1 pt. each)

A. 

B. 

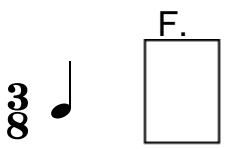
C. 


D. 


E. 


Add **one rest** to complete each measure.


(1 pt. each)

F. 

G. 

H. 

I. 

J. 

7. Match the term with its correct definition.

(10 pts. total)

- \_\_\_\_\_ *quasi*
- \_\_\_\_\_ *molto espressivo e tranquillo*
- \_\_\_\_\_ *appassionato e con fuoco*
- \_\_\_\_\_ *ad libitum*
- \_\_\_\_\_ *dolce ma non diminuendo*
- \_\_\_\_\_ *poco a poco stringendo*
- \_\_\_\_\_ *subito meno forte*
- \_\_\_\_\_ *cantabile e sempre espressivo*
- \_\_\_\_\_ *morendo*
- \_\_\_\_\_ *tempo rubato*

- A. fading away
- B. light, swift, graceful
- C. very slowly and songlike
- D. passionately and with fire
- E. as if; nearly
- F. sweetly
- G. little by little hurrying the time
- H. at will
- I. sweetly but not getting softer
- J. marked with sudden accent
- K. suddenly less loud
- L. in a singing style and always expressive
- M. flexibility of tempo, freely
- N. smooth, connected
- O. very expressive and peaceful

8. Match the correct answer for each question about the typical classical sonata form.

(2 pts each)

- |                    |  |
|--------------------|--|
| _____ Movement I   | A. Slow, lyrical or intensely emotional          |
| _____ Movement II  | B. Fast or very fast, energetic                  |
| _____ Movement III | C. Dancelike, usually triple meter               |
| _____ Movement IV  | D. Fast, dramatic, exciting; sonata-allegro form |

E. Number the order of the sections in Sonata-Allegro Form:

(2 pts, no partial credit)

Recapitulation \_\_\_\_ Development \_\_\_\_ Exposition \_\_\_\_

9. Write the key and quality (example: G min) in the first blank and the type of cadence (plagal, authentic, half, or deceptive) in the second blank .

(1 pt each blank)

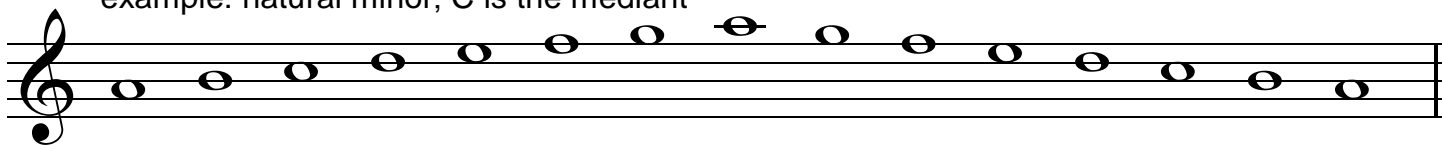


\_\_\_\_\_

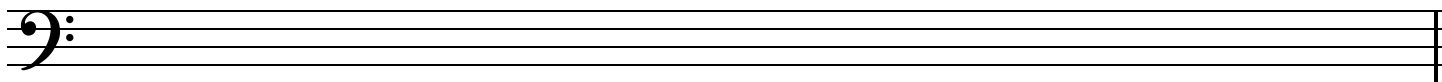
10. Write the following scales using accidentals and whole notes. Spell the scale up and down. Use the given scale degree and scale quality to choose the scale to build. See example.

(5 pts each, no partial credit)

example: natural minor; C is the mediant



major; E $\flat$  is the dominant



melodic minor; F is the subdominant

