

Nebraska Music Teachers Association Sample 2B

Note: Extra examples have been added in most sections.
Actual tests will have only 10 pts total per section.

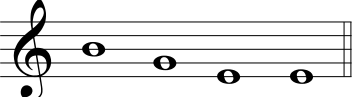
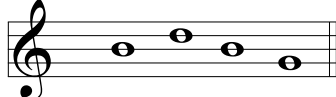
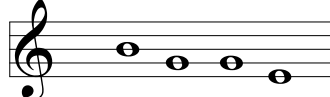
1. Ear Training: Each example will be played twice.

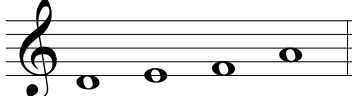
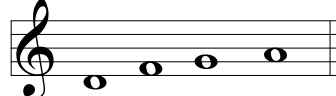
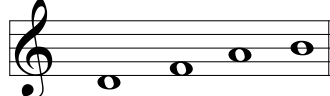
A. Circle whether the triad you hear is major or minor. (1 pt each)

1. Major Minor

2. Major Minor

B. You will hear a four note pitch pattern. Circle the pattern you hear. (1 pt each)

3.   

4.   

C. Circle Major or minor for each scale that you hear. (1 pt each)

5. Major Minor

6. Major Minor

7. Major Minor

D. Circle the rhythm pattern you hear. (1 pt each)

8.  

9.  

E. Circle the interval you hear. (1 pt each)

10. Major 2nd Perfect 5th Perfect 8th

11. Major 2nd Perfect 5th Perfect 8th

12. Major 2nd Perfect 5th Perfect 8th

13. Major 2nd Perfect 5th Perfect 8th

Nebraska Music Teachers Association

Sample 2B

2. Music History

A. Circle the name of the composer in the **Classical** period. (1pt each)

- | | | |
|--------------|----------|--------|
| 1. Bach | Mozart | Handel |
| 2. Scarlatti | Schubert | Haydn |
| 3. Beethoven | Grieg | Joplin |

B. Circle the correct answer for each number. (1 point each)

- | | | |
|--|-----------|-----------|
| 4. The Classical period is between- | 1600-1750 | 1750-1825 |
| 5. The Baroque period is between- | 1825-1900 | 1600-1750 |

C. Circle the characteristics most used in the **Classical** period for each number. (1 pt each)

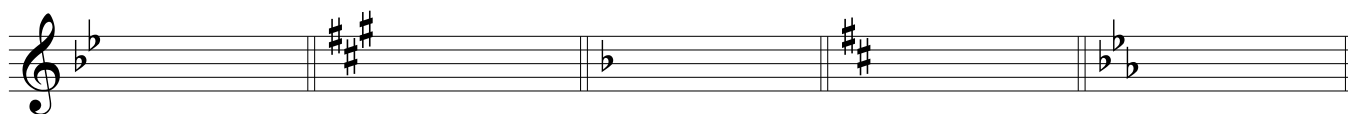
- | | | |
|-------------------------|--------------------|-------------------------|
| 6. complex rhythms | expressive | songlike melodies |
| 7. ornamentation | well-defined forms | dissonance |
| 8. emotionally reserved | counterpoint | greater dynamic changes |

D. Label each instrument for the period of music it is most closely related to:

B for Baroque, **C**, for Classical: (1 pt each blank)

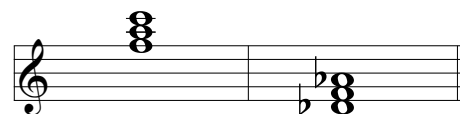
9. _____ Harpsichord _____ Fortepiano

3. Identify and name the following Key signatures, Major, (Maj) and Minor, (min). (1 pt each blank)



- | | | | | |
|-----------|-----------|-----------|-----------|-----------|
| _____ Maj | _____ Maj | _____ Maj | _____ Maj | _____ Maj |
| _____ min | _____ min | _____ min | _____ min | _____ min |

4.6. Identify these triads by letter name and quality, Major (Maj) or Minor (min). (1 pt each blank)

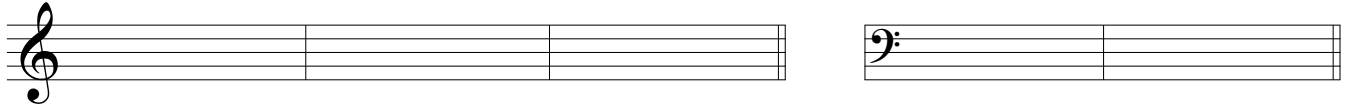


- | | | | | | | | |
|--------|---------|--------|---------|--------|---------|--------|---------|
| _____ | _____ | _____ | _____ | _____ | _____ | _____ | _____ |
| letter | quality | letter | quality | letter | quality | letter | quality |
| name | | name | | name | | name | |

Nebraska Music Teachers Association

Sample 2B

5. A. Draw the following notes using **LEDGER LINES**. Flag and stem direction must be correct. (2 pts each)



A below the staff, eighth note

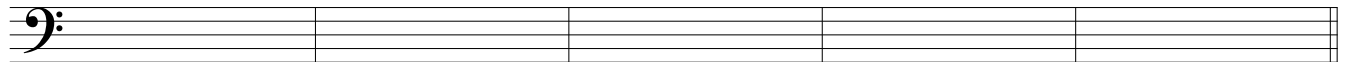
B above the staff, quarter note.

C above the staff, sixteenth note

D below the staff, half note

E above the staff, whole note

- B. Draw the following rests. Rests must be placed correctly on the staff.



quarter rest

half rest

eighth rest

sixteenth rest

whole rest

6. Match the term on the right with the definition on the left. (2 pts each)

A. phrase

_____ the fifth tone in the scale

C. tonic

_____ a group of related measures

D. period

_____ the first tone in a scale

C. strophic

_____ a group of related phrases

E. dominant

_____ one part form, **AA**

7. Time signatures (2 pts each)

- A. Match each time signature on the left with the correct meaning on the right.

1. $\frac{3}{8}$

_____ 4 beats per measure, the quarter note gets 1 beat

2. $\frac{6}{8}$

_____ 3 beats per measure, the eighth note gets 1 beat

3. **C**

_____ 6 beats per measure, the eighth note gets 1 beat

- B. True or False-

4. Simple meter is a time signature whose beats can be divided by **4**. True False

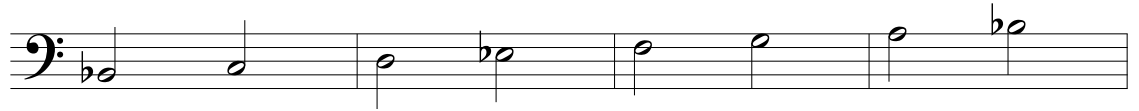
5. Compound meter is a time signature whose beats can be divided by **3**. True False

Nebraska Music Teachers Association

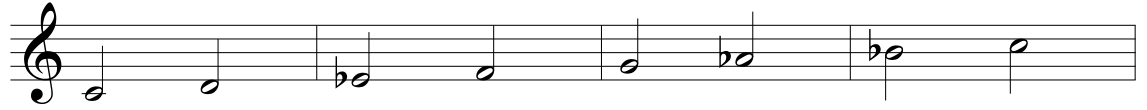
Sample 2B

8. Scales (1 pt each)

A. Identify the following scales by letter name and quality by circling either, major,(Maj), or minor,(min).



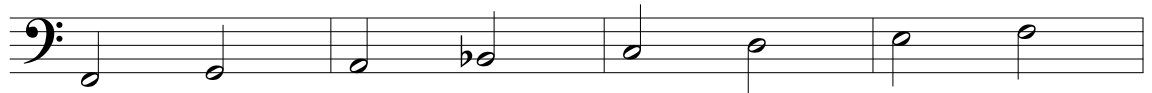
1. ____ Maj min



2. ____ Maj min



3. ____ Maj min

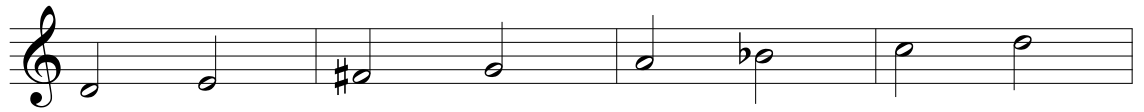


4. ____ Maj min



5. ____ Maj min

B. Circle the incorrect note for each of these scales. There is 1 incorrect note per scale.



6. d natural minor



7. A Major



8. E flat Major

C. Circle the correct answer.

9. **C** is the relative Major of (circle one) **d** **e** **a** Minor

10. **G** is the relative Major of (circle one) **e** **b** **f** Minor

Nebraska Music Teachers Association

Sample 2B


9. Write the quality and number for each of these intervals. For quality use , "P" for perfect, "Maj" for Major; ie. **P 5** or **Maj 3**. (2 pts each)

A musical staff in treble clef with six measures, each containing a different interval. Below the staff are six blank lines for the student to write the quality and number of each interval.

10. Match the terms on the right with the definitions on the left. (1 pt each)

A. 

_____ play very fast

B. 

_____ coda sign

C. 

_____ raise the note one whole step

D. 

_____ dal segno sign

E. sempre

_____ gradually play faster

F. presto

_____ accent, play the note louder

G. *pp*

_____ play at walking speed

H. accel.

_____ play very soft

I. 

_____ always

J. andante

_____ play one octave higher