

Nebraska Music Teachers Association  
Sample Test 1B

1. Ear Training. Each example will be played two times.

A. Circle whether the sound you hear is *legato* or *staccato*. (1 pt each)

1. Legato                      Staccato

2. Legato                      Staccato

B. Circle the three-note pitch pattern you hear. (1 pt each)

3.

The first staff shows a three-note ascending pattern: G2, A2, B2. The second staff shows a three-note descending pattern: B2, A2, G2.

4.

The first staff shows a three-note ascending pattern: C4, D4, E4. The second staff shows a three-note descending pattern: E4, D4, C4.

5.

The first staff shows a three-note ascending pattern: G2, A2, B2. The second staff shows a three-note descending pattern: B2, A2, G2.

C. Circle the rhythmic pattern you hear. (1 pt each)

6.

The first staff shows a half note followed by two quarter notes. The second staff shows a quarter note followed by two eighth notes.

7.

The first staff shows a quarter note followed by two eighth notes. The second staff shows a quarter note followed by two eighth notes.

8.

The first staff shows a quarter note followed by two eighth notes. The second staff shows a quarter note followed by two eighth notes.

D. Circle whether the sound you hear is *forte* or *piano*. (1 pt each)

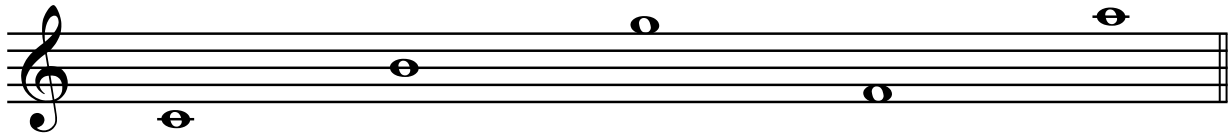
9. Forte                      Piano

10. Forte                      Piano

**Nebraska Music Teachers Association**  
**Sample Test 1B**

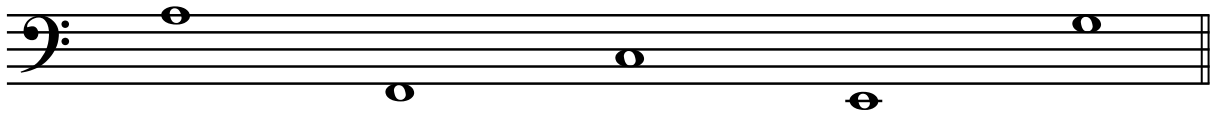
2. Notes

A. Circle the correct letter name for each of the notes. (1 pt each)



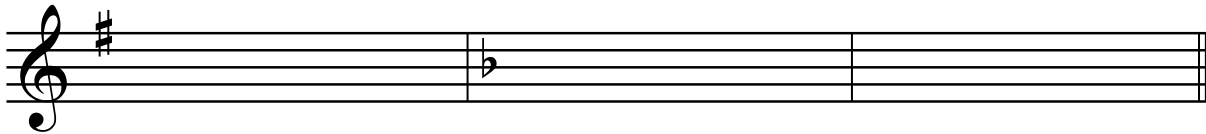
E G C      B F A      D G C      G E F      A B D

B. Write the letter name below each note. (1 pt each)



\_\_\_\_\_

3. Name these **Major** key signatures and circle the letter name of the flat or sharp. (2 pts each)



Key of \_\_\_\_\_

Key of \_\_\_\_\_

Key of \_\_\_\_\_

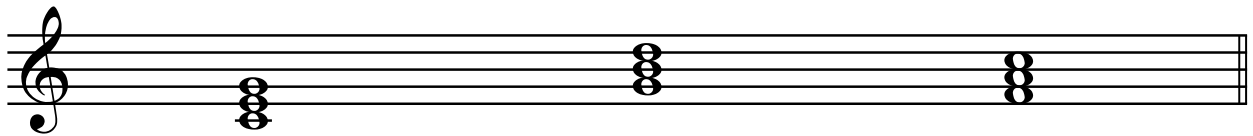
Circle the sharp used:

Circle the flat used:

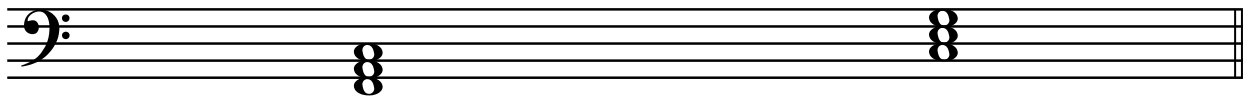
D# F# C#

Eb Gb Bb

4. Write the letter name of these triads. (2 pts each)



\_\_\_\_\_



\_\_\_\_\_

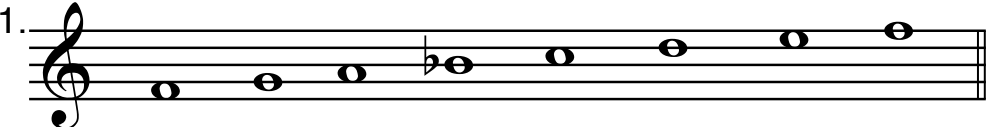
**Nebraska Music Teachers Association**  
**Sample Test 1B**

5. A. Circle or write in the correct type of step, half or whole, to complete the order for a major scale. (1 pt each blank)

Whole - \_\_\_\_\_ - \_\_\_\_\_ - Whole - \_\_\_\_\_ - Whole - \_\_\_\_\_  
                     Half                      Half                      Half                      Half  
                     Whole                      Whole                      Whole                      Whole

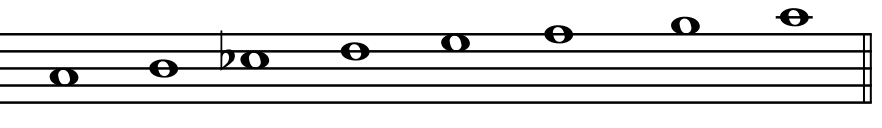
B. Write the number of each correctly written scale below. (2 pts each)

C Major \_\_\_\_\_



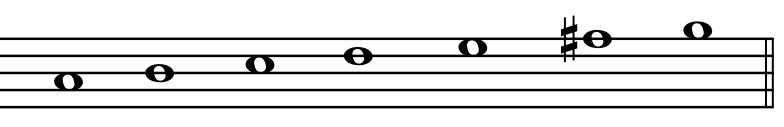
1.

G Major \_\_\_\_\_

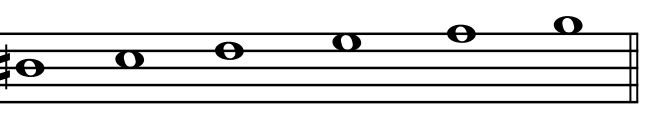


2.

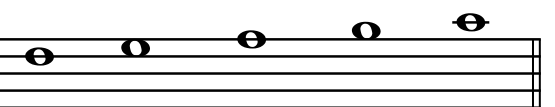
F major \_\_\_\_\_



3.



4.



5.

6. Name all of your Festival pieces and their composers. (10 pts)

Solo \_\_\_\_\_ Composer \_\_\_\_\_

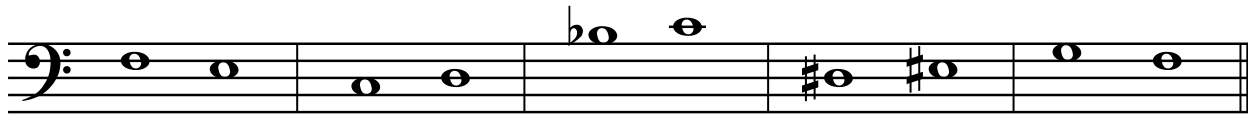
Solo \_\_\_\_\_ Composer \_\_\_\_\_

Solo \_\_\_\_\_ Composer \_\_\_\_\_

Solo \_\_\_\_\_ Composer \_\_\_\_\_

**Nebraska Music Teachers Association**  
**Sample Test 1B**

7. A. Circle whether the notes are a half step or whole step apart. (1 pt each)



Half  
Whole

Half  
Whole

Half  
Whole

Half  
Whole

Half  
Whole

B. Circle whether the notes are a 2nd, 3rd, 4th, or 5th apart. (1 pt each)

C down to A

F up to B

D up to E

A down to D

G up to B

2nd 3rd 4th

3rd 4th 5th

2nd 3rd 4th

3rd 4th 5th

2nd 3rd 4th

8. Match the symbol or term in the first column with its meaning in the second column, by writing the correct letter in the blank. (1 pt each)

A. rit.

\_\_\_\_\_ bass clef

B. #

\_\_\_\_\_ time signature

C.

\_\_\_\_\_ play loudly

D. *mp*

\_\_\_\_\_ gradually play slower

E.  $\frac{4}{4}$

\_\_\_\_\_ a triad

F. *f*

\_\_\_\_\_ to play smooth, connected

G.

\_\_\_\_\_ raises a note 1/2 step

H.  $\flat$

\_\_\_\_\_ staccato note

I.

\_\_\_\_\_ play medium soft

J. legato

\_\_\_\_\_ lowers a note 1/2 step

**Nebraska Music Teachers Association**  
**Sample Test 1B**

9. A. Time Signatures:

1. In the time signature  $\frac{3}{4}$  how many counts are in each measure?(1 pt) \_\_\_\_\_

2. In the time signature  $\text{C}$  how many counts are in each measure?(1 pt) \_\_\_\_\_

B. Circle the correct answer for each note or rest. (1 pt)

1.  this is a-      whole note      half note      quarter note

2.  this is a-      half note      eighth notes      quarter note

3.  this is a-      half rest      whole rest      quarter rest

4.  this is a-      quarter note      quarter rest      whole note


C. Write how many counts each note or rest receives in the  $\frac{4}{4}$  time signature.(1 pt)

\_\_\_\_\_      \_\_\_\_\_      \_\_\_\_\_      \_\_\_\_\_

10. Match the symbol or term in the first column with its meaning in the second column, by writing the correct letter in the blank. (1 pt each)

A.  \_\_\_\_\_ the end

B.  \_\_\_\_\_ the distance between two notes

C. common time \_\_\_\_\_ tied notes

D.  \_\_\_\_\_ play softly

E. fine \_\_\_\_\_ natural sign

F. *mf* \_\_\_\_\_ key signature

G.  \_\_\_\_\_ slur

H. interval \_\_\_\_\_ same as 4/4 time

I. *p* \_\_\_\_\_ play medium loud

J.  \_\_\_\_\_ treble clef