



# Sample 3A

Note: Correct melody is first 4 mm's of Gurlitt's Fanfare, Op.117, No. 8  
 Source "Everybody's Perfect Masterpieces" Vol. 1

## 1. Ear Training cont.

E. Circle the three wrong notes in this melody.



## 2. Music History

A. Circle the correct answer for each of the following questions.

1. What are the approximate dates of the Romantic period of music.

1900-present     1825-1900     1600-1750     1750-1825

2. Which characteristic is most closely identified with the Romantic period.

Emphasis on form     Counterpoint     Atonality     Expressiveness

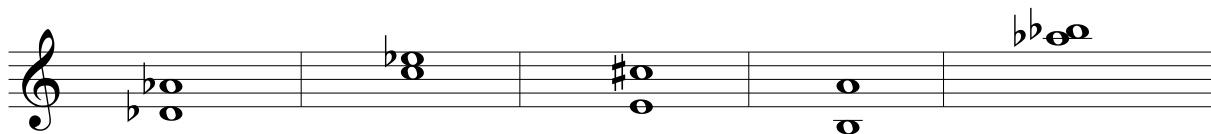
3. Circle the composer from the Romantic period in each group.

- |              |          |        |           |
|--------------|----------|--------|-----------|
| a. Beethoven | Handel   | Grieg  | Scarlatti |
| b. Kuhlau    | Schubert | Mozart | Bach      |
| c. Chopin    | Clementi | Haydn  | Gershwin  |

## 3. Intervals

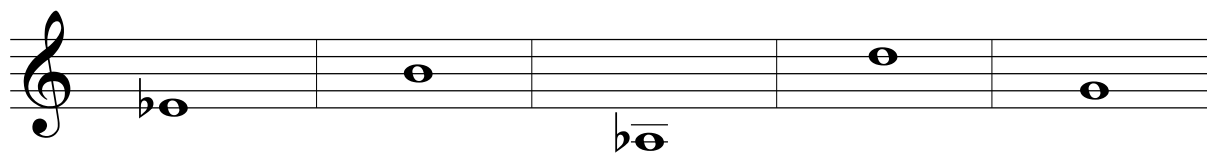
A. Identify these intervals by quality and number.

Use these abbreviations for quality- **Perf.**(Perfect), **Maj.** (Major), and **Min.**(minor).



i.e. Maj 7 \_\_\_\_\_

B. Add the TOP note to complete the following intervals.



Perf 8     Min 2     Perf 4     Min 6     Maj 7

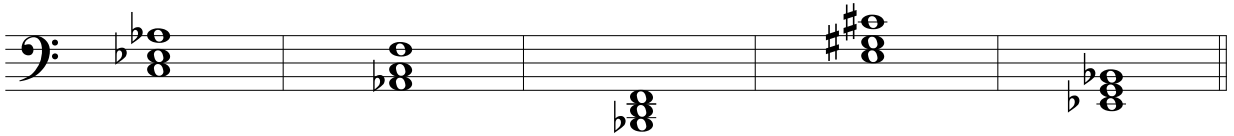
# Sample 3A

## 4. Triads

A. In a first inversion triad which note names the chord?

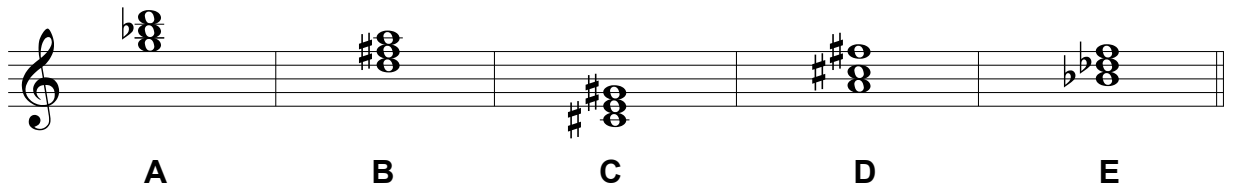
Bottom                      Middle                      Top

B. Identify each triad below by letter name and quality, Maj. or Min.



ie. C Maj \_\_\_\_\_

C. Use the letters beneath these triads to answer the questions below.

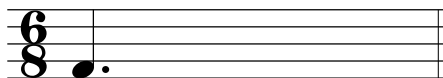


1. Which chord is in 1st inversion? \_\_\_\_\_
2. Which chord is the I chord in C- sharp min.? \_\_\_\_\_
3. Which chord is the IV chord in F min.? \_\_\_\_\_
4. Which chord is the V chord in G Maj.? \_\_\_\_\_

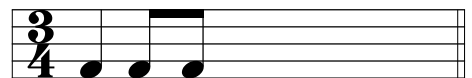
D. Circle the authentic cadence-                      **IV I                      I V                      V I**

## 5. Rhythm

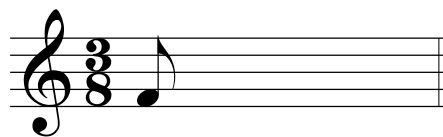
A. Complete each measure as directed. Notes must be beamed correctly per time signature.



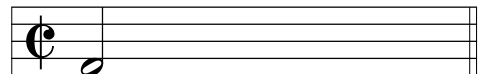
with ♩'s



with ♩ triplets



with ♩'s



with ♩ triplets

# Sample 3A

## 5. Rhythm cont.

### B. Matching

- |                      |   |
|----------------------|---|
| _____ Compound meter | 1. a time signature whose beats can be divided by 2 |
| _____ Simple Meter   | 2. a time signature whose beats can be divided by 3 |

### C. Write in the correct answer for each of the following.

- In  $\frac{3}{2}$  time, 2 eighth notes are equal to \_\_\_\_\_ count/s  
two - one half - one
- In  $\text{c}$  time, eighth notes are beamed in groups of \_\_\_\_\_ notes.  
three - four - six
- In  $\frac{6}{8}$  time, eighth notes are beamed in groups of \_\_\_\_\_ notes.  
two - three - four
- In  $\frac{3}{8}$  time, sixteenth notes receive \_\_\_\_\_ count/s.  
two - one half - one

## 6. Key Signatures

### A. Notate the Key Signatures in both treble and bass clefs for the the following.

- E-flat Major      G Major      F-sharp Minor      D Minor      E major

### B. Identify the Key signature and scale degree. Use the terms tonic, subdominant, or dominant.

ie. e minor

dominant

\_\_\_\_\_ minor

\_\_\_\_\_ Major

\_\_\_\_\_ minor

\_\_\_\_\_ Major

\_\_\_\_\_

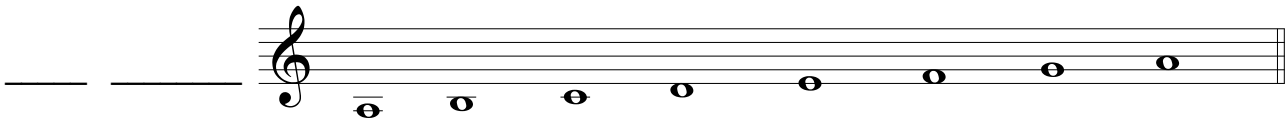
### C. Write the order of the flats as they appear in the key signature.

\_\_\_\_\_

# Sample 3A

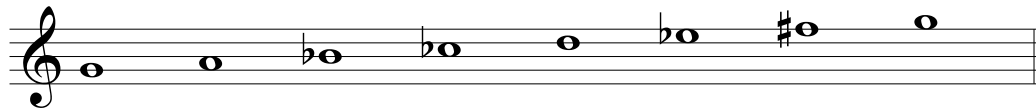
## 7. Scales

A. Identify the following scales, Key and quality, ie. C Maj, (Major) or d min, (minor).  
All minors are in the natural form.



B. Circle the 2 incorrect notes of the following scales.

1. G natural minor



2. E major



## 8. Musical form

A. Circle the correct answer.

1. A period is-

a group of related phrases

a group of related measures

one part form

2. Binary form is-

one part form

AB

a musical statement modified a number of ways

3. Strophic form is-

AB

one part form

a group of related phrases

## Sample 3A

### 8. Musical form cont.

#### 1. cont.

d. Theme and variations are-

a group of related measures

a musical statement modified a number of ways

e. A phrase is

Strophic form

a group of related measures

two part form

### 9. Tempo

A. Which is the fastest tempo?

andante

prestissimo

allegretto

B. Which is the slowest tempo?

adagio

largo

moderato

### 10. Terms and Symbols

A. Match the following terms and symbols with their definitions.

There are more definitions than you will use.

\_\_\_\_\_ relative minor of A<sup>b</sup> Major

\_\_\_\_\_ con

\_\_\_\_\_  $\text{‰}$

\_\_\_\_\_ dolce

\_\_\_\_\_ a tempo

\_\_\_\_\_ moto

\_\_\_\_\_ enharmonic tone of C<sup>#</sup>

\_\_\_\_\_ tonic

\_\_\_\_\_ *sf*

\_\_\_\_\_ accelerando

\_\_\_\_\_ *8<sup>va</sup>*

\_\_\_\_\_ senza

1. B<sup>x</sup>

2. gradually play faster

3. the fourth tone of the scale

4. C<sup>b</sup>

5. play one octave higher

6. sforzando

7. f minor

8. without

9. a minor

10. with

11. return to the sign

12. the first tone of the scale

13. resume or return to the previous speed

14. sweetly

15. motion